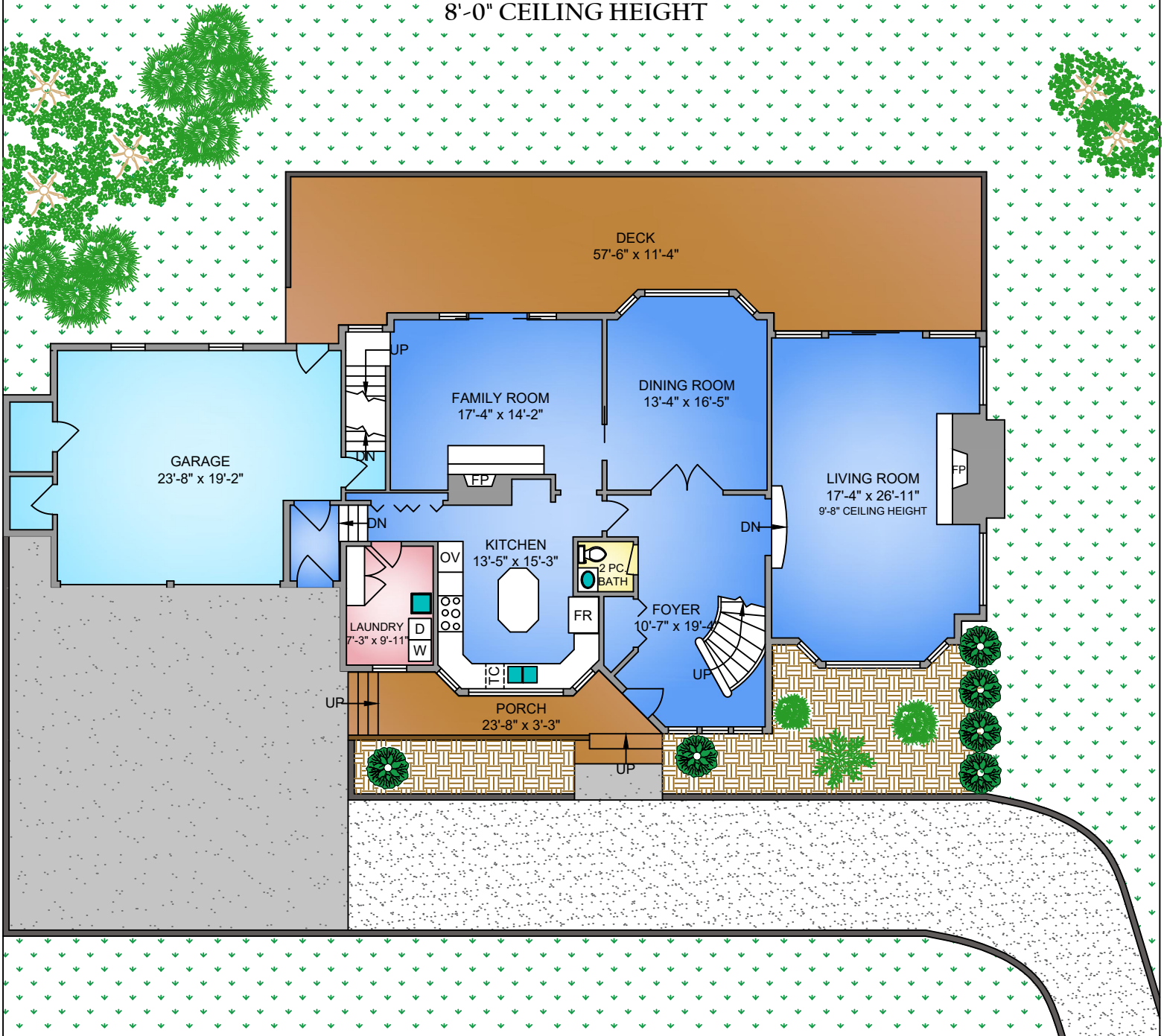
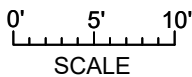
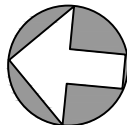


MAIN FLOOR
1699 SQ. FT.
8'-0" CEILING HEIGHT



NORTH



250-884-9753
 matt@propermeasure.com
 www.propermeasure.com

315 BECHER BAY ROAD
 JULY 19, 2022

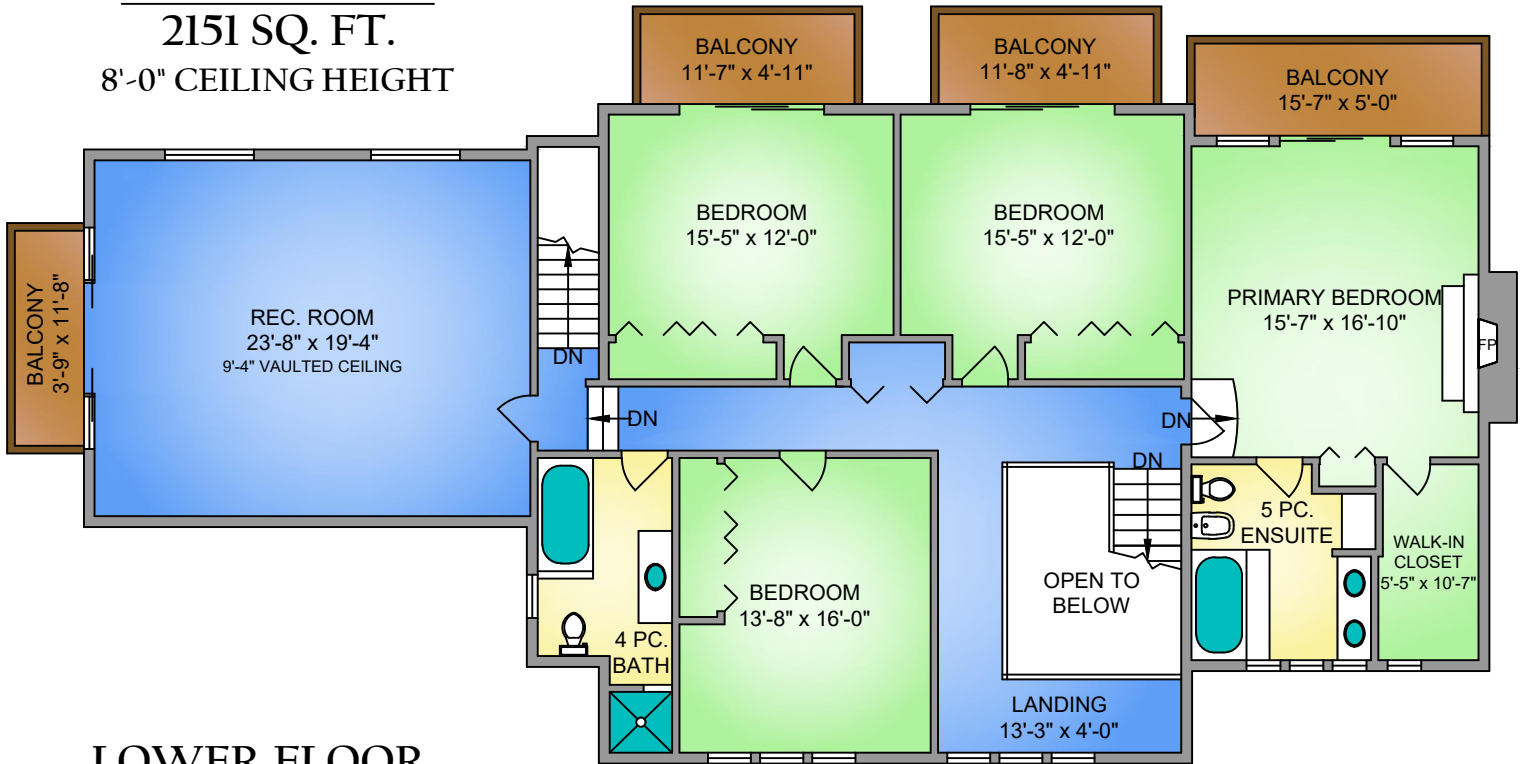
PREPARED FOR THE EXCLUSIVE USE OF PREFERRED HOMES TEAM
 PLANS MAY NOT BE 100% ACCURATE, IF CRITICAL BUYER TO VERIFY.

FLOOR	AREA (SQ. FT.)			
	FINISHED	UNFINISHED	GARAGE	DECK / PATIO / PORCH
LOWER	-	524	-	-
MAIN	1699	-	510	762
UPPER	2151	-	-	235
TOTAL	3850	524	510	997

UPPER FLOOR

2151 SQ. FT.

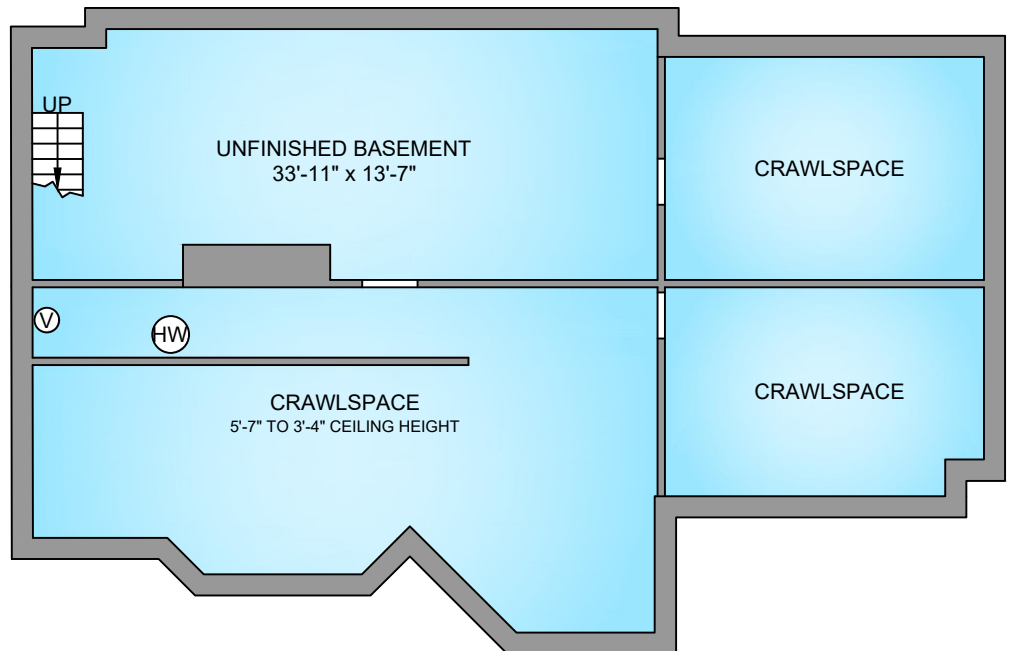
8'-0" CEILING HEIGHT



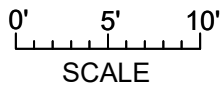
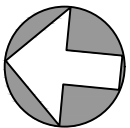
LOWER FLOOR

524 SQ. FT.

6'-8" CEILING HEIGHT



NORTH



THE PREFERRED HOMES TEAM
www.PreferredHomes.ca RE/MAX CAMOSUN



250-884-9753
matt@propermeasure.com
www.propermeasure.com

315 BECHER BAY ROAD JULY 19, 2022				
PREPARED FOR THE EXCLUSIVE USE OF PREFERRED HOMES TEAM PLANS MAY NOT BE 100% ACCURATE, IF CRITICAL BUYER TO VERIFY.				
FLOOR	AREA (SQ. FT.)			
	FINISHED	UNFINISHED	GARAGE	DECK / PATIO / PORCH
LOWER	-	524	-	-
MAIN	1699	-	510	762
UPPER	2151	-	-	235
TOTAL	3850	524	510	997